



Model Number

MNI40N-*6**

Magnetic, Non Contact

Features

- **Compact design**
- **Long service life through bearing-free technology**
- **Suitable for very high rotational speeds**
- **Simple installation, using LED status indication**
- **Integrated self-test for reliable function**
- **5 V / 10 V ... 30 V with short-circuit proof push-pull output**
- **RS 422 functionality at 5 V operation**
- **Highly shock / vibration and soiling resistant**
- **Extended temperature range**

Description

The magnetic incremental encoder MNI40 combines an exceptionally robust measurement system with intelligent diagnosis and alignment functions in the smallest space. Its highly compact encapsulated housing gives the sensor its high resistance to harsh environmental conditions. The installation-friendly design and simple guided adjustment of the sensor using two-color status LED reduces the installation time considerably.

Release date: 2009-04-15 16:37 Date of issue: 2009-04-15 T42651_ENG.xml

Technical data

Indicators/operating means

LED red/green Operating display / Alignment aid

Electrical specifications

Operating voltage U_B 10 ... 30 V DC
5 V DC for RS 422

No-load supply current I_0 max. 40 mA

Output

Output type push-pull, incremental (RS 422, incremental)

Voltage drop U_d ≤ 2.5 V (< 2.5 V)

Operating current max. per channel 30 mA, short-circuit proof (max. per channel 20 mA, conditionally short-circuit proof)

Output frequency max. 1 MHz

Connection

Cable $\varnothing 4.7$ mm, 8 x 0.128 mm², 2 m

Standard conformity

Protection degree DIN EN 60529, IP67

Climatic testing DIN EN 60068-2-3

Emitted interference DIN EN 61000-6-4

Interference rejection DIN EN 61000-6-2

Shock resistance DIN EN 60068-2-27, 200 g, 6 ms

Vibration resistance DIN EN 60068-2-6, 40 g, 10 ... 2000 Hz

Ambient conditions

Operating temperature -25 ... 100 °C (248 ... 373 K)

Storage temperature -40 ... 100 °C (233 ... 373 K)

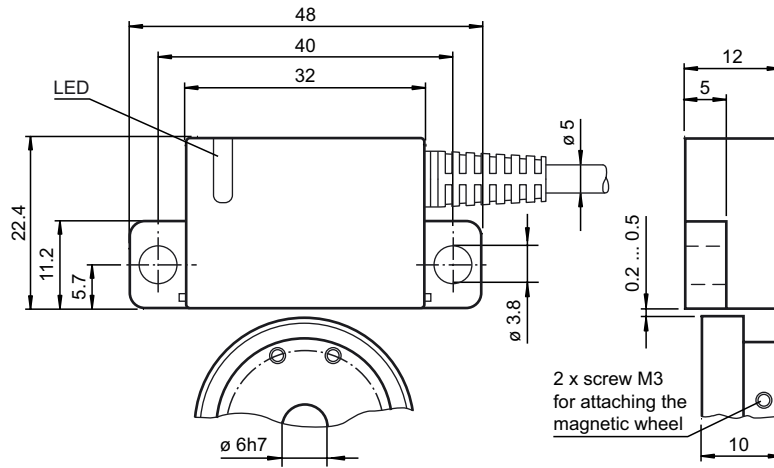
Mechanical specifications

Material

Housing PA

Cable PUR

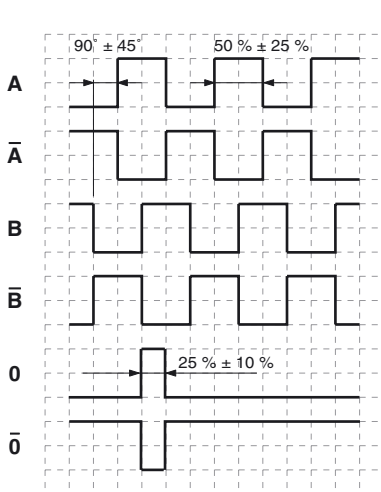
Rotational speed max. 30000 min⁻¹



Electrical connection

Signal	Cable, 8-core
GND	White
+U _b	Brown
A	Green
B	Grey
\bar{A}	Yellow
\bar{B}	Pink
0	Blue
$\bar{0}$	Red
Screen	-

Signal outputs



ccw - with top-view

